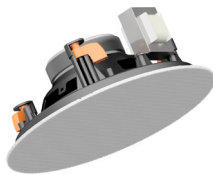
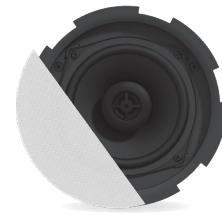
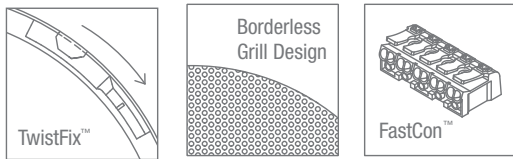


CIRA series

QuickFit™ 2-way ceiling speakers

Designed to offer the best value for money ratio. The CIRA series are coaxial 2-way ceiling speakers featuring exceptional intelligibility and musical performance. The TwistFix™ borderless grill design offers easy but solid assembly and a completely seamless transition from grill to ceiling. This results in a perfect blend in to its environment. The QuickFit™ installation system combined with FastCon™ connector offers lifetime stability and great installers convenience.

- Removable logos for most discrete use
- Optionally available outdoor resistant grills



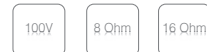
CIRA506

The CIRA506 features a 5 ¼" driver using polypropylene cone material, combined with a 1" Mylar tweeter fitted with a phase plug for excellent off axis performance. The selected materials guarantee a low distortion performance with smooth and flat frequency response. A continuous power handling of 30 Watt (RMS) and maximum power handling of 60 watt is achieved, while fitted with a multi-tapping 100V line transformer with tapings for 6W, 3W, 1.5W and an 8 Ohm bypass connection.

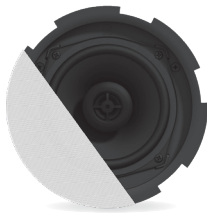
Outdoor front grills

A variety of grills for the CIRA speakers are optionally available, including a selection of most common used RAL colors and electroplated grills for installation in applications with high levels of humidity or permanent outdoor installations.

- for CIRA5xx series speakers : GLI05/O
- for CIRA7xx series speakers : GLI07/O
- for CIRA8xx series speakers : GLI09/O



Specifications are preliminary and subject to change without notice



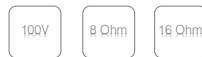
CIRA524

The CIRA524 features a 5 ¼" driver using polypropylene cone material, combined with a 1" Mylar tweeter fitted with a phase plug for excellent off axis performance. The selected materials guarantee a low distortion performance with smooth and flat frequency response. A continuous power handling of 30 Watt (RMS) and maximum power handling of 60 watt is achieved, while fitted with a multi-tapping 100V line transformer with tapings for 24W, 12W, 6W and an 8 Ohm bypass connection.



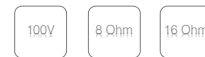
CIRA724

The CIRA724 features a 6.5" driver using polypropylene cone material, combined with a 1" Mylar tweeter fitted with a phase plug for excellent off axis performance. The selected materials guarantee a low distortion performance with smooth and flat frequency response. A continuous power handling of 30 Watt (RMS) and maximum power handling of 60 watt is achieved, while fitted with a multi-tapping 100V line transformer with tapings for 24W, 12W, 6W and an 8 Ohm bypass connection.



CIRA824

The CIRA824 features a 8" driver using polypropylene cone material, combined with a 1" Mylar tweeter fitted with a phase plug for excellent off axis performance. The selected materials guarantee a low distortion performance with smooth and flat frequency response. A continuous power handling of 40 Watt (RMS) and maximum power handling of 80 watt is achieved, while fitted with a multi-tapping 100V line transformer with tapings for 24W, 12W, 6W and an 8 Ohm bypass connection.



	Max power	RMS power	Max SPL	Sensitivity 1W / 1 m	Power taps / impedance	Freq response +- 3 dB	Cut-out dimensions	Dimensions
CIRA506/W	60 Watt	30 Watt	102 dB	87 dB	6W / 3W / 1.5W / 8 Ω	60 Hz – 20 kHz	Ø 170 mm	Ø 193 mm x 83 mm
CIRA524/W	60 Watt	30 Watt	102 dB	87 dB	24W / 12W / 6W / 8 Ω	60 Hz – 20 kHz	Ø 170 mm	Ø 193 mm x 83 mm
CIRA530D/W	60 Watt	30 Watt	102 dB	87 dB	16 Ω	60 Hz – 20 kHz	Ø 170 mm	Ø 193 mm x 83 mm
CIRA724/W	60 Watt	30 Watt	103 dB	88 dB	24W / 12W / 6W / 8 Ω	55 Hz – 20 kHz	Ø 200 mm	Ø 224 mm x 78 mm
CIRA730D/W	60 Watt	30 Watt	103 dB	88 dB	16 Ω	55 Hz – 20 kHz	Ø 200 mm	Ø 224 mm x 78 mm
CIRA824/W	80 Watt	40 Watt	105 dB	89 dB	24W / 12W / 6W / 8 Ω	40 Hz – 20 kHz	Ø 243 mm	Ø 243 mm x 82 mm
CIRA840D/W	80 Watt	40 Watt	105 dB	89 dB	16 Ω	40 Hz – 20 kHz	Ø 243 mm	Ø 243 mm x 82 mm